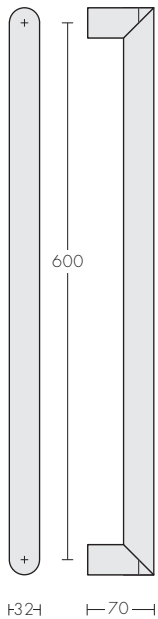
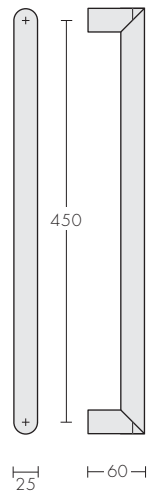


## Angle Pull and Cabinet Handles

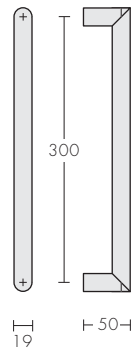
Angle 701



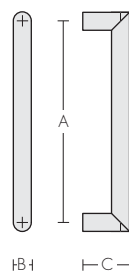
Angle 702



Angle 703



Angle Custom



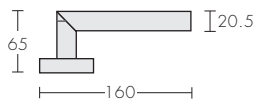
Solid brass or bronze rod is used for these handles. The pillars are set into the handle rod at each end as a three piece construction method.

### Custom Sizes

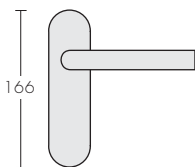
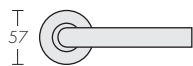
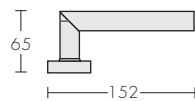
When custom handles are required, specify:  
 A = Hole centres of pillars  
 B = Diameter of rod  
 C = Height of handle  
 D = Finish

## Angle Lever Handle

Angle 711 on Angle/Rod C Rose



Angle 711 A1-220



## Angle Robe Hook

Angle 709



Angle Robe Hook is mounted to the wall with an 8mm mounting screw fastened into a solid timber stud. Recommended minimum framing timber thickness to mount to is 50mm.

## Angle/Rod Escutcheons

3450



3451



3452



3452i



3453



3454

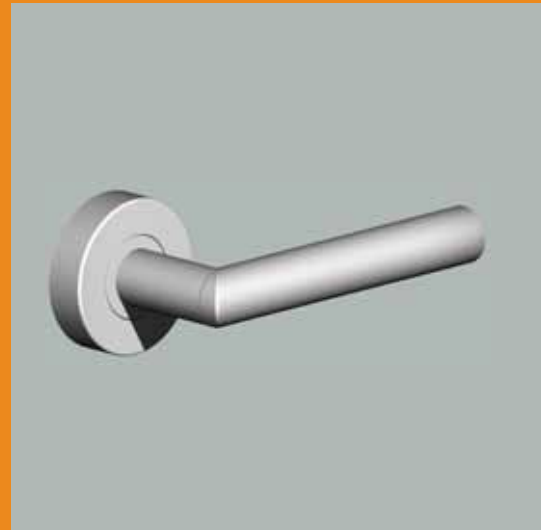


3455





Angle 701



Angle 711 on C rose