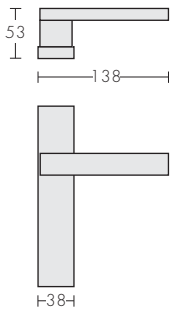


Line Lever Handles (Style 2)

Left-hand handle shown.

Please specify at time of order: Left hand (LH) or Right hand (RH) as viewed from the 'outside'. (Refer to Technical Section)

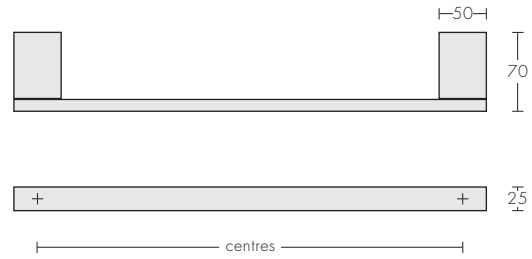
Line 5011



The only handle plate style used with this Line Lever Handle is the B1 plate, 38mm wide (refer to Technical Section). They match the soft edges of the Lever Handle with a complementary width.

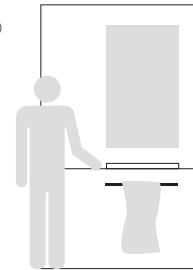
Line Towel Rail

Line 5005



Line Towel Rails are available with centres at 300, 450, 600 and 800mm. 600mm shown, please specify at time of order.

Example:
Line 5005-600
Towel Rail

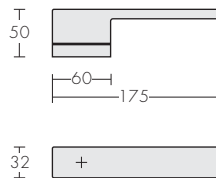


Line Lever Handles on Rose

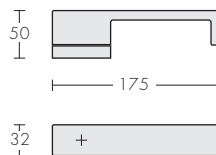
Left hand handles shown.

Please specify at time of order: Left hand (LH) or Right hand (RH) as viewed from the 'outside'. Line 5012, 5013 and 5014 all have fixing centres at 38mm or 41mm horizontally about the centreline. (Refer to Technical Section)

Line 5012

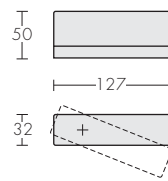


Line 5013

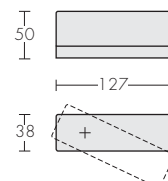


Line 5014

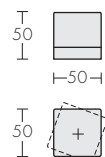
Designed by D. Chiriano, Architrend, Australia



Line 5015



Line 5019

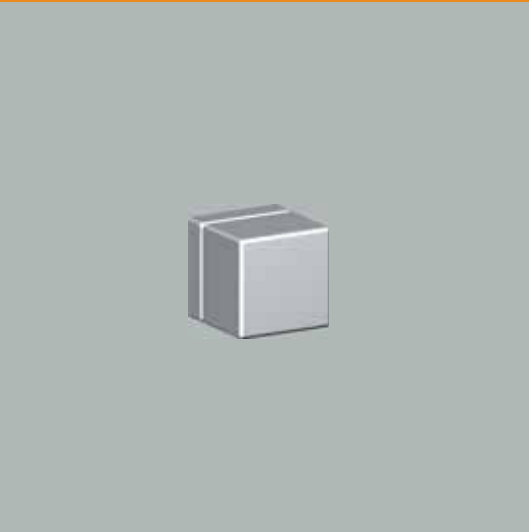


Line 5019 knob on rose has both horizontal and vertical fixing at 38mm or 41mm centres, ie 4 holes. (Refer to Technical Section)

Example and specification of an order for Line lever or fixed handles on rectangular roses.

| Handle Type | Fixing Centres | Handing | Lever (L) Fixed (F) | Finish | Spindle Size | Quantity |
|-------------|----------------|---------|------------------------|--------|--------------|----------|
| 5012 | 38mm or 41mm | LH | L | SCPV | 8mm | 5pr |

It is recommended that the lock type is stated when ordering lever handles.



Line 5019



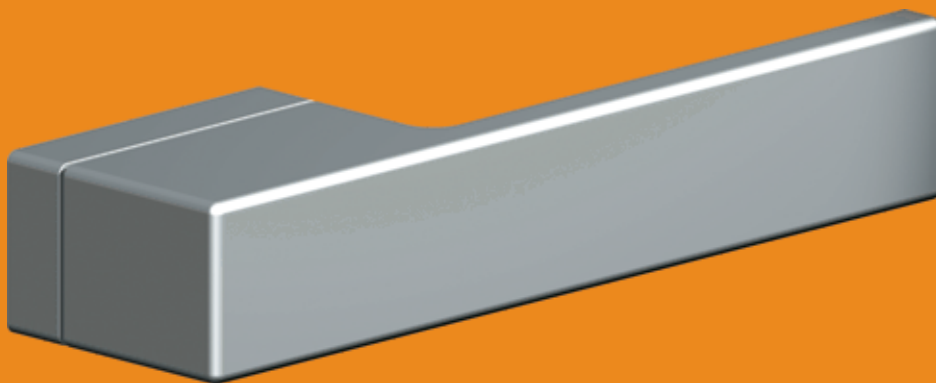
Line 5013



Line 5011 on B1-130 plate



Line 5014



Line 5012