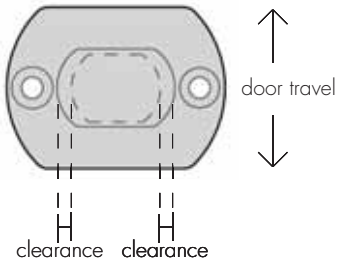


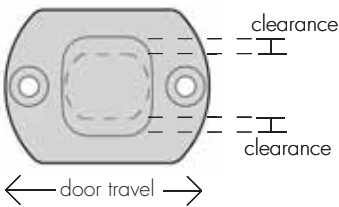
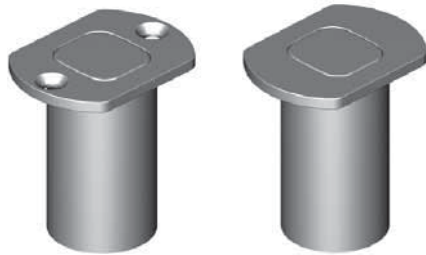
2180

2190



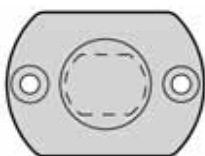
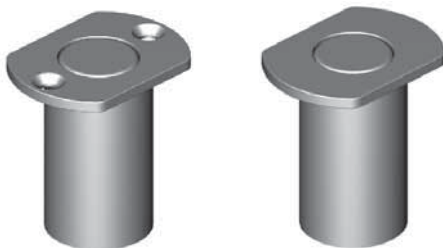
2181

2191



2182

2192



To locate a top hung sliding door, or similar in both directions.

Dust Sockets

This range of Dust Sockets are designed to locate doors with chant™ Flush Sliding Bolts or Two Point Lock Bolts.

The shape of the bolt opening is to restrict movement in the desired direction, while providing clearance and alignment tolerance at 90 degrees to the direction of the bolt or door travel.

The Dust Socket can be screw or glue fixed.

Refer to Finishes Section for finish options.

