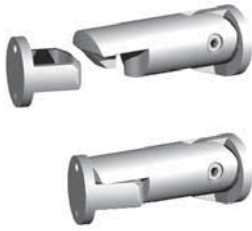


Hold Backs



Hold Back 3240

Installed length 80mm

The hook bar has an integral rubber door stop and a nylon anti-rattle catch mechanism.



Pedestal Hold Back 3241

Height 160mm

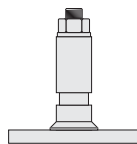
Fastened to the floor with 3 x countersunk woodscrews or, 3 x 6.0 or 6.5mm countersunk masonry anchors.



Pedestal Hold Back 3242

Height 160mm

Fastened to concrete with an M8 masonry anchor.



Masonry Anchor Fixing and Stem for Pedestal Hold Back

The column of the holdback fastens to the stem with 2 x socket set screws from the rear.

Line Hold Backs



Line Hold Back 3250

Installed length 80mm

The hook bar has an integral rubber door stop and a nylon anti-rattle catch mechanism.



Line Pedestal Hold Back 3251

Overall Height 160mm

Fastened to the floor with 4 x countersunk wood screws or 4 x 6.0 or 6.5mm countersunk masonry anchors.



Line Pedestal Hold Back with Foot Release 3252

Overall Height 160mm

Fastened to the floor with 4 x countersunk wood screws or 4 x 6.0 or 6.5mm countersunk masonry anchors.



Line Pedestal Hold Back 3253

Overall Height 160mm

Fastened to the concrete floor with an M8 masonry anchor.



Line Pedestal Hold Back with Foot Release 3254

Overall Height 160mm

Fastened to the concrete floor with an M8 masonry anchor.