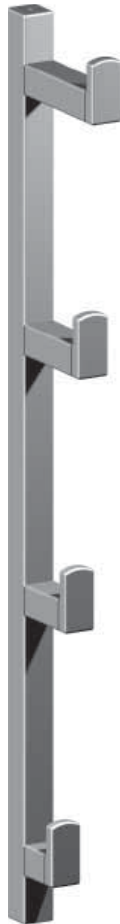


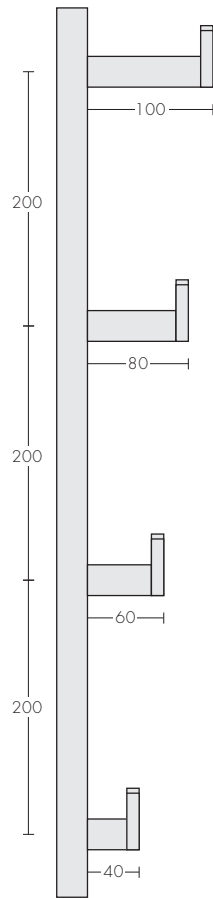
Two Hook Vertical  
4622



Four Hook Vertical  
4624



Three Hook Vertical  
4623



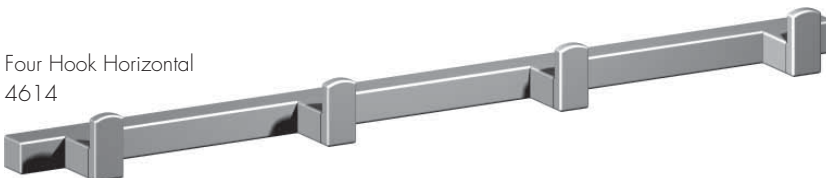
Two Hook Horizontal  
4612



Three Hook Horizontal  
4613



Four Hook Horizontal  
4614



One Piece  
4601



Two Piece  
4602



Two Piece  
4603

## Line Robe and Coat Hooks

This range of hooks are designed as singular or multiple hook designs.

The hooks are mounted onto a single or multiple mounting collars fastened to the wall by wood screws, plaster board anchors (if the plaster board is thick enough to hold the weight), gravity toggles, masonry anchors or similar fixing devices.

The multiple hooks, as vertical or horizontal designs, are available in the sizes stated, or can be custom made in length to suit site conditions, where solid mounting onto wall studs is desirable or necessary. The hooks are spaced at 200mm centres.

The main bar is 25.4mm (1") square and has the recesses machined into it for the mounting collars, with socket set screw fixing from the underside or at each end onto the mounting collars. On the horizontal coat hooks, these recesses can therefore be moved along the bar to suit solid mounting options that may be available. If custom variations are required, provide detailed drawings of:

- bar length
- mounting points
- number of hooks, spacing and distance in from each end (The end hooks can be flush to the end of the bar with mounting points to the inside)
- length of the hooks if there is a special requirement

### Code Numbers

- 4601 50mm x 25mm x 50mm projection, one piece
- 4602 25mm x 25mm x 50mm projection, two piece
- 4603 30mm x 25mm x 50mm projection, two piece

- 4612 Two hook, 200mm hook centres x 300mm overall length
- 4613 Three hook, 500mm overall length
- 4614 Four hook, 700mm overall length

- 4622 Two hook, 200mm hook centres x 225mm overall length
- 4623 Three hook, 500mm overall length
- 4624 Four hook, 700mm overall length