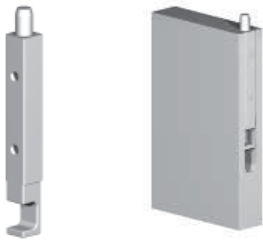


Socket Bolt 2810 Socket Bolt shown in the edge of the door
Also suitable for fitting into a rebated door and to the face of the door



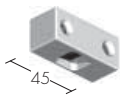
Necked Bolt 2840 Necked Bolt shown on the face of the door



Spring Bolt 2870 Spring Bolt shown fitted into a rebated door



Surface Strike for Socket Bolt 2890



Surface Strike for Spring Bolt 2891



Surface In-line Strike for Socket Bolt 2892



Flat Strike for Necked Bolt 2893



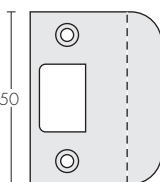
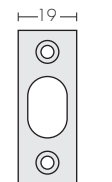
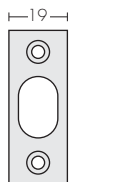
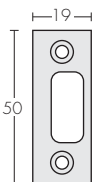
Flat Strike for Socket Bolt 2895



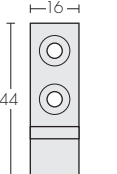
Waterproof Strike 2896



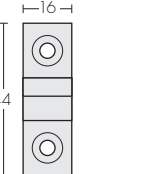
Flat Strike for Spring Bolt 2894



Spring Bolt Strike 2897



Spring Bolt Strike 2898



Square Bolts

This unique range of bolts with clean simple lines are extremely versatile in their operating functions. The bolts can be surface or flush mounted on the face or edge of a door, or fitted into the rebate of the inactive leaf of a pair of doors.

A generous and accessible finger recess makes them practical to use. The surface mounted bolts can be machined with a 2mm radius to match the Line door handles range, specify B1 after the code number when ordering. ✧ See example below.

Uses:

- For securing standard or french doors with a Spring Bolt at the top and a Socket or Necked Bolt at the bottom
- Securing the inactive leaf on a pair of doors when fitted into the rebate. Avoids the need for locking bolts on the face of the door
- Self latching at the top of a bifold door with a socket bolt at the bottom
- Positive latching at the top of a door leading to a swimming pool
- On a sliding door, for latching in the closed position. This application may need a custom strike

Socket Bolt

12.7mm diameter bolt x 20mm throw.

Necked Bolt

Although not a true necked bolt, it serves the same function. The bolt has a flat on it which allows the strike to be flush to the edge of a door sill. Reversible onsite if necessary.

Spring Bolt

14mm diameter bolt with a flat face for latching into the strike. Reversible onsite if necessary.

Bolt Packer

For use with Socket, Necked or Spring Bolts where the bolt needs to be spaced over the door seals.

Mounting

The bolts are secured to the door by two 12 gauge x 50mm countersunk, square drive stainless steel screws on the 150mm and 300mm bolts. The 450mm and 600mm bolts have 3 screws.

Locking

The Socket and Necked Bolt can be locked with a Key Insert Lock 2099. Refer to Flush Sliding Bolts.

Size

The body of all bolts is 19mm square.

To order a Square Bolt: (example)

Code Number	✧	Finish
2810	B1	SCPV

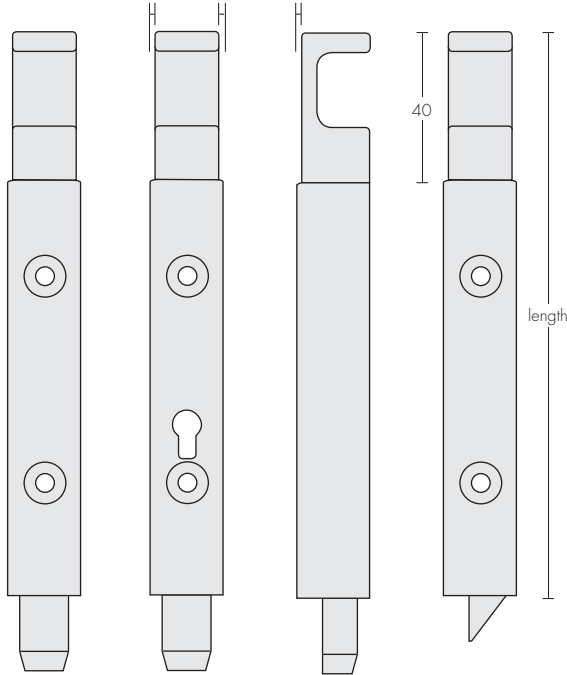
To order a Strike: (example)

Code Number	Strike/Bolt centerline to door frame edge ★	Finish
2894	20mm	SCPV

★ This applies to Flat Strike for Spring Bolt 2894

Clearance for a recessed installation

Clearance to prevent scratching of door surface

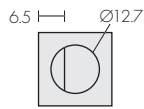


Example of a standard Socket Bolt

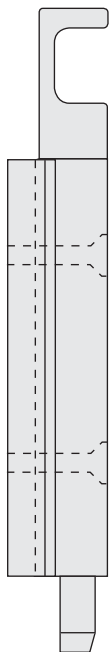
Example of a locking Socket Bolt

Example of a Necked Bolt

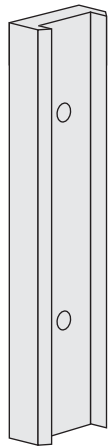
Example of a Spring Bolt



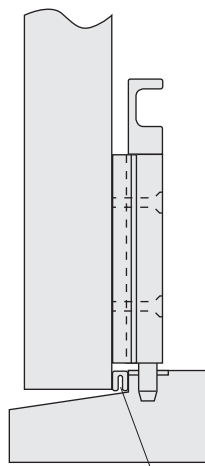
19mm Square



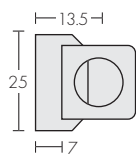
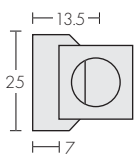
Necked Bolt using Bolt Packer



Bolt Packer



Weather seal

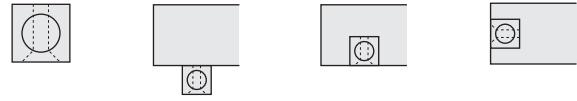


2mm radius can be applied to these outer edges to match the Line ranges of handles.

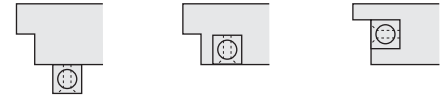
Square Bolt Code Numbers

(viewed from the bolt end of the square bolt)

Socket Bolts Mounting options on standard doors



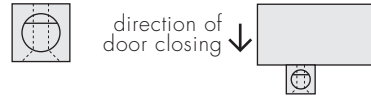
Mounting options on rebated doors



Code numbers based on length in mm

	150	200	300	450	600
Socket Bolt	2810	2811	2812	2813	2814
Socket Bolt Locking	2820	2821	2822	2823	2824

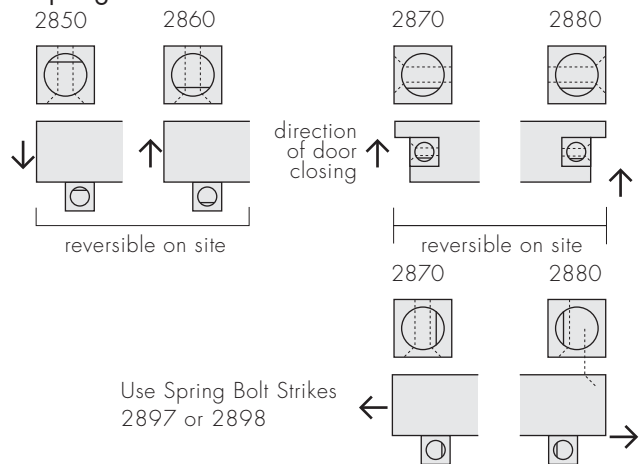
Necked Bolts



Code numbers based on length in mm

	150	200	300	450	600
Necked Bolt	2830	2831	2832	2833	2834
Necked Bolt Locking	2840	2841	2842	2843	2844

Spring Bolts

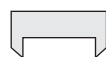


Use Spring Bolt Strikes 2897 or 2898

Code numbers based on length in mm

	150	200	300	450	600
	2850	2851	2852	2853	2854
	2860	2861	2862	2863	2864
	2870	2871	2872	2873	2874
	2880	2881	2882	2883	2884

Bolt Packer



2800	2801	2802	2803	2804
------	------	------	------	------